

installation instructions

EN

Thank you for choosing our mineral wall panels. When properly installed and cared for, your new tiles will be easy to maintain and will retain their beautiful appearance for many years to come.

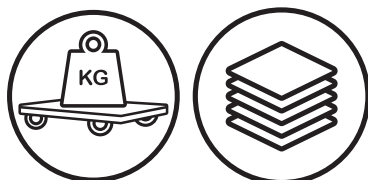
Please carefully read all instructions before beginning the installation. The manufacturer is not responsible for and cannot be held liable for any labor costs, project issues or damages resulting from improper installation.

Due to natural manufacturing variations, exact color consistency between different production lots cannot be guaranteed.

GENERAL INFORMATION

Transport & handling

- Handle, transport and store your mineral wall panels with care to prevent damage.
- The boxes may be heavy. Always use proper lifting techniques and when possible, rely on material handling equipment such as dollies or carts. Never attempt to lift more weight than you can safely manage, ask for assistance when needed.
- Store cartons flat, never on their edge.



Environment

- The conditions of the installation environment are crucial for ensuring proper installation and long term performance of the mineral wall panels. These panels are designed for interior use only.
- Mineral wall panels must not be installed outdoors or in areas where temperatures fall outside the specified acceptable range.
- After installation, ensure that the panels are never exposed to temperatures below -10°C or above 60°C .

Installation near fireplaces, stoves and gas cookers

Fireplace

Please note that heat naturally rises and that the wall above the fireplace can reach very high temperatures. For this reason, it is not recommended to install mineral wall panels directly above the fireplace, as prolonged exposure to heat can cause warping, discoloration or other damage.

Always place the panels at least 15 cm from the opening of the fireplace or any other surface that can become very hot. This prevents the wall temperature from rising above the safe usage limit of 60°C . In addition, install a non-combustible, heat-resistant barrier, such as brickwork, stone, cement board or other fire-resistant material, between the fireplace and the panels.

Gas stoves and cookers

The same minimum distance of 15 cm applies to stoves, including gas cookers. This distance must be measured from the edge of the open flame (including where the flame widens under a pot or pan) or the heating element.

Keep sufficient space to prevent the wall panels from overheating.

GENERAL PREPARATIONS

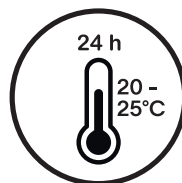
Inspect the panels

- Before installation, remove the protective film from the panel surface and wipe the panels with a clean, soft cloth.
- Carefully inspect all panels in daylight for any visible defects or damage. This includes checking for color or gloss inconsistencies, scratches, dents and verifying that the panel edges are straight and free from damage.
- Claims regarding surface defects or inherent issues that were visible prior to installation will not be accepted once the panels have been installed.



Acclimatisation

- Allow the mineral wall panels to acclimate for 24 hours in the room they will be installed, at a temperature between 20°C and 25°C .
- Mineral wall panels must be installed only in temperature controlled environments. A stable temperature of $20 - 25^{\circ}\text{C}$ must be maintained both before and during installation. The use of portable heaters is not recommended.



installation instructions

EN

Inspect substrate conditions

- Verify that the substrate meets all requirements outlined in these instructions as well as applicable local building codes. Ensure that appropriate moisture control measures are in place. If the substrate conditions are unsatisfactory, do not proceed with installation and contact your supplier instead.
- Inspect the substrate thoroughly. It must be flat and level within 2 mm over 1 m, with grouts over 5 × 4 mm filled and levelled. The surface must be clean and free from dust, grease, wax, paint, varnish, oils, sulfur, solvents, excess moisture, alkalis or any other contaminants.



- Do not use products containing petroleum, solvents, or citrus oils when preparing the substrate, as these may affect the bonding performance. The use of adhesive abatement chemicals will void the warranty.
- Mineral wall panels should not be installed directly onto raw concrete, poured concrete, or concrete block basement walls. Any voids or irregularities must be levelled beforehand.
- The substrate must be flat and even; otherwise, the installer should use a template to measure the panels to ensure a precise fit.

Dry environments:

- Acceptable substrates include framed walls with existing tiles or ceramic, drywall, cement board, OSB, or plywood. All substrates must be structurally sound, meet local building codes, and incorporate appropriate moisture management measures.
- For installations over new drywall, all joints must be taped and finished. Since drywall sheets have tapered edges along the long sides, these areas must be filled to create a smooth, flat and flush surface.



Damp environments (backsplash, laundry room, bathroom):

- Suitable substrates include framed walls with existing tile or ceramic, drywall, cement board, OSB, or plywood.
- All substrates must be structurally sound, meet local building code requirements, and include proper moisture control measures.

Wet environments (shower, tub, laundry room, direct or flowing water):

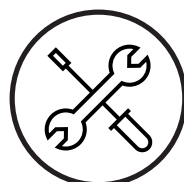
- Be aware that inadequate waterproofing in wet areas can cause severe structural damage. The substrate must be fully watertight and compliant with local building codes and regulations.
- Existing ceramic tile walls may be covered directly with mineral wall panels without additional substrate preparation. Always check whether an adequate moisture barrier is provided in the existing structure.
- All other substrates must be installed over a waterproof underlayment or membrane, such as Schluter Kerdi Board®, Cement Board®, GP DensShield®, Johns Manville GoBoard®, HardieBacker®, WPBK Triton®, Fiberock®, or comparable products.
- Always follow the manufacturer's installation guidelines to ensure a fully waterproof enclosure. Any failure in substrate performance remains the responsibility of the substrate manufacturer.

INSTALLATION

Preparation

Tools

- Protective eye wear
- Measuring tape
- Utility knife
- Level
- Hand roller
- Hand saw or circular saw
- Table saw
- Jig saw
- Drill bit & jig saw (for cutting holes)
- Caulking gun
- Adhesive for mineral wall panels (MS-polymer based adhesive)
- Silicone-based sealant for wet environments
- Matching trims (optional)
- Rubber gloves
- Cleaner and cloth for glue and silicone



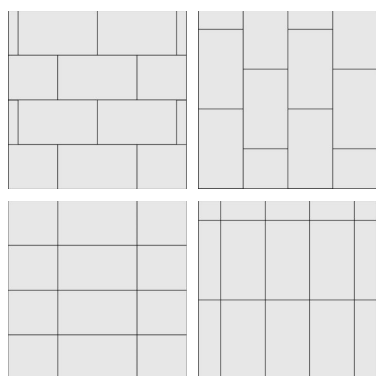
Pattern / lay out

- It is recommended to complete a dry layout before applying any adhesive.
- As with any tile installation, the layout should be balanced: shift the layout by half a tile to avoid narrow cuts at the edges.

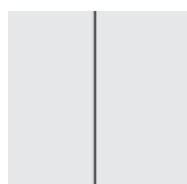
installation instructions

EN

- Check the walls for straightness and level. Some panels may need trimming to accommodate wall irregularities or tile dimensions.
- Depending on your project, panels can be centered on a focal point, such as behind a sink or in the middle of a room.
- For layout purposes, work outward from both sides of this focal point to ensure proper tile alignment and symmetry.
- Smaller formats with four sided tongue and groove connections can be installed horizontally or vertically, in either a brick staggered pattern or corner to corner layout.

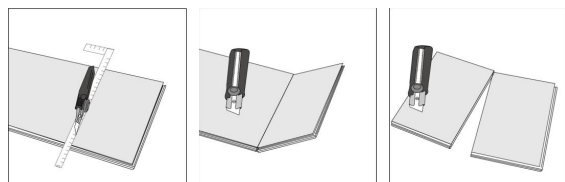


The large-format panel (900 × 2800 mm), which has a two-sided tongue and groove connection, can only be installed in a vertical orientation.

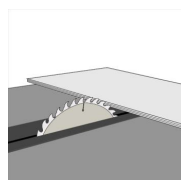


Cutting

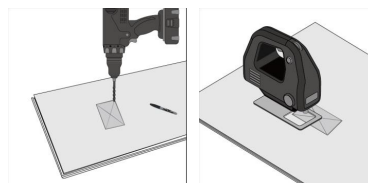
Make each cut with the decorative (finished) side facing up to achieve a clean, accurate edge. For smaller formats (e.g. 389 × 778 mm), measure and mark the panel before cutting. Cut the panel using a sharp utility knife. Always use appropriate PPE when working with sharp tools. If needed, use sandpaper to smooth the cut edges.



For larger formats (900 × 2800 mm), standard woodworking tools, -such as a table saw or circular saw equipped with a fine tooth blade-, can be used to achieve clean, smooth cuts. Always use appropriate PPE and follow safety precautions when operating saws or handling sharp tools.



To install panels around outlets and light switches, measure and mark the area of the required opening. Drill a hole in one corner of the cut out section, then use a jigsaw or hand saw to cut along the marked lines. If needed, use sandpaper to smooth the edges



Adhesive

Use an adhesive suitable for mineral wall panels (MS polymer based). Always perform an adhesion test to verify compatibility between the adhesive and the substrate. If the results are unsatisfactory, do not proceed with the installation and contact your supplier or the adhesive manufacturer for guidance.

Please follow the adhesive manufacturer's instructions regarding storage, acclimatisation and preparation of the adhesive before installation. Also ensure that you carefully follow the manufacturer's guidelines when applying the adhesive.

Ensure sufficient adhesive coverage to achieve a strong bond and always perform bond testing before proceeding.

Remove any visible excess adhesive from the surface while it is still wet. Do not allow the adhesive residue to dry, as dried adhesive is difficult to remove and may damage the panel surface. Never use detergents.

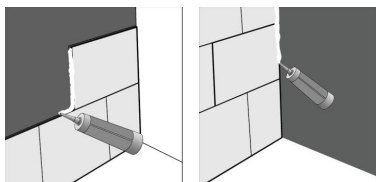
For installations in wet area environments, the adhesive must be applied as a full, continuous spread over the substrate.

installation instructions

EN

Sealant

Remove all existing silicone joints before starting the installation.



Damp environments

Apply 100% silicone sealant around the entire installation perimeter and within all tongue and groove joints to ensure that your mineral wall panels installation is fully waterproof.

Wet environments

When 100% silicone sealant is applied along the full installation perimeter and in every tongue and groove joint, our mineral wall panels provide a fully waterproof installation.

However, it is always recommended to follow local building codes for wet areas such as showers or other locations exposed to direct running water.

If corner trims are used, apply silicone sealant inside all trim channels.

Trims

Trims are available through your retailer or supplier and offer a simple, stylish way to finish or enhance your installation.

Remember to install the trims first wherever possible, considering the drying time of the adhesive used to fix them.

Inside corners

The V Trim or inside corner trim should be adhered directly to the substrate. Apply a small bead of adhesive along the back of the trim and press it firmly into place. If needed, apply a bead of sealant inside each trim channel to prevent moisture from reaching the substrate.

It is also possible to complete inside corners without using trims. In this case, the tongue and groove must be cut off on the panel edges facing the corner, and the corner joint should be finished with a flexible silicone sealant.



Outside corners

L trims can be used to bridge or cover outside corners. To install, apply a thin bead of adhesive to the underside of the trim and press it firmly into place. If needed, apply a bead of sealant to the underside of the trim to prevent moisture from reaching the substrate.



End profile

U trims are used to finish the exposed ends of panels that do not connect to another surface. To install, apply a thin bead of adhesive inside the trim channel and slide it into position beneath the tile.



Fixture attached to the wall

Remove all electrical plates, vents and fixtures attached to the wall before installation.

Note: When reinstalling electrical plates or fixtures after the panels are installed, longer screws may be required.

Installation

First row and panel

Install your mineral wall panels starting from the bottom-left corner and continue upward toward the top-right of the surface.

The tile must be installed with the groove facing upward and outward.

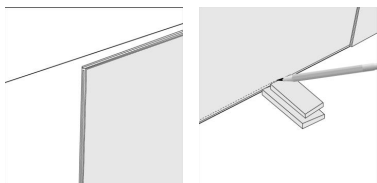


To install the first panel, start with the bottom row. Use a ledger board or draw a level reference line at the desired height of the first row to ensure a perfectly level installation. Align the top edge of each panel in the bottom row with this reference line. Confirm that the first panel fits correctly and is level before proceeding. If needed, place temporary

installation instructions

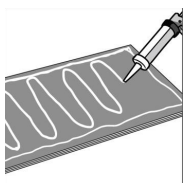
EN

shims beneath the bottom panels to keep them in position while the adhesive cures.

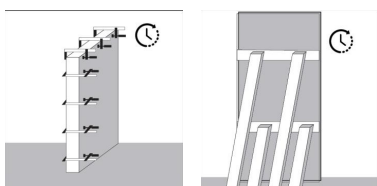


Apply adhesive to the back of the panel. Follow the adhesive manufacturer's instructions carefully. Apply a 6 mm bead of adhesive in a zigzag pattern, or in strips, horizontally or vertically, evenly distributed over the back of the panel with a spacing of 20 mm, including a bead around the entire perimeter of the panel, approximately 25 mm from the edges.

Alternatively, you can apply the adhesive onto the substrate with a notched trowel, following the manufacturer's recommended trowel notch size and application method.



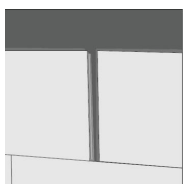
Press the panel firmly onto the substrate to set it in place. Apply even, consistent pressure across the entire surface using your hands. If needed, use shims or pins to keep the panels securely positioned until the adhesive has fully set.



Remove any visible excess adhesive from the surface while it is still wet. Do not allow the adhesive residue to dry, as dried adhesive is difficult to remove and may damage the panel surface.

Second panel

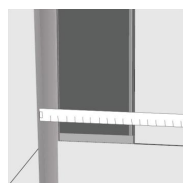
Connect the next panel by fully inserting the tongue into the groove.



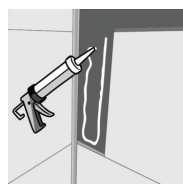
Continue this process until the entire bottom row is installed.

Last panel: When installing in a corner without trims, cut off the flange facing the corner to allow a flush installation against the substrate. When installing with trims, before the installation of the last panels in the row, that would go into the corner, first install the inside corner trims into each corner using adhesive and allow 24 hours for the adhesive to cure. Ensure the V-trim is oriented with the deep channel facing the panel you are installing.

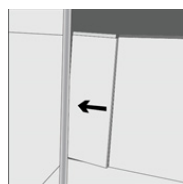
In order to determine the length of the panel section, measure from the inside lip of the previously installed panel to the inside edge of the pre-installed V-trim.



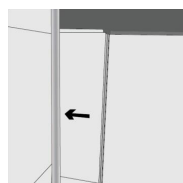
After cutting the panel to the required length, apply adhesive in a zigzag pattern to the back of the panel or directly onto the substrate.



Tilt the panel with the sawn edge into the groove of the corner profile, ensuring that the other side does not come into contact with the already installed panel.



Push the panel into the edge trim profile while lowering it toward the wall. Once the panel is fully seated in the V trim profile, the tongue-and-groove becomes visible again.



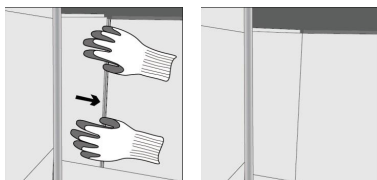
Apply sealant around the entire installation perimeter, as well as to the interlocking edges and all trims, when installing in a wet environment.

installation instructions

EN

Once sealed, pull the panel into position manually. Draw the panel toward the interlocking joint until the connection is fully engaged and seated tightly.

Tip: Wearing rubber gloves can improve grip and make it easier to guide the panel into place.



Wipe away any visible excess adhesive while it is still wet. Do not allow adhesive residue to dry, as dried adhesive is difficult to remove and may damage the panel surface.

Once the first row has set, allow the adhesive to fully cure before continuing. This ensures that all subsequent rows remain level and properly aligned. Install the remaining panels according to your chosen pattern, using the same adhesive application and installation methods described above.

Top Row

Install the top row in the same manner as the previous rows until you reach the final panel at the corner. If the panels meet the ceiling, remove the tongue and groove from the top edge of the last panel, then finish the joint with silicone sealant or install a U trim for a clean finish.

Important:

For installations in shower zones, around baths or in other high moisture environments, a continuous line of silicone must be applied at every connection, both between the panels themselves and between the panels and any support trim, to ensure a fully waterproof seal. It is essential to apply a bead of silicone where the panel meets the edge of the shower or bath. Our guarantee covers only the waterproof nature of the panels, not the joints. Properly sealing all joints is the responsibility of the installer and we cannot be held liable for any damage resulting from insufficient sealing.

Installing a Shower Niche

We recommend using preformed niches designed to be installed either under or over your new wall tile installation.

Niches installed under the wall tiles:

Apply sealant to all edges of the preformed niche before placing it into the substrate opening. Install your wall tiles so they overlap the exposed lip of the niche. Seal all corners, edges and any potential water entry points with waterproof silicone. Cut trims to fit the niche borders, fix them in place with adhesive, and finish by applying silicone around all trim edges.

Niches installed over the wall tiles:

First install your wall tiles so the tile edges meet the edges of the niche opening in the substrate. Insert the preformed niche and seal all contact points between the niche and the tile surface.

Finishing and maintenance

- Do not attach accessories such as hooks, mirrors or other fixtures directly to the panels. To maintain water tightness, you can first apply some sealant in the drilled holes and then screw everything in place.
- Use doorstops, hinge stops or doorknob protectors to prevent accidental impact damage.
- Do not mount heavy accessories, such as coat hooks, light fixtures or mirrors, directly onto the panels. Instead, drill through the panels and use appropriate screws and wall plugs to secure the item safely into the wall behind. Additional support should be installed behind the panels where required.
- For routine maintenance, ordinary household cleaners are sufficient.
- The panels can be thoroughly cleaned with a soft, non abrasive cleaning agent, although in most cases a damp cloth is all you need.
- Do not use abrasive cleaners, harsh chemicals, solvents, or chloride based products.
- (Cleaning products must be pH neutral (pH 7).)

installation instructions

EN